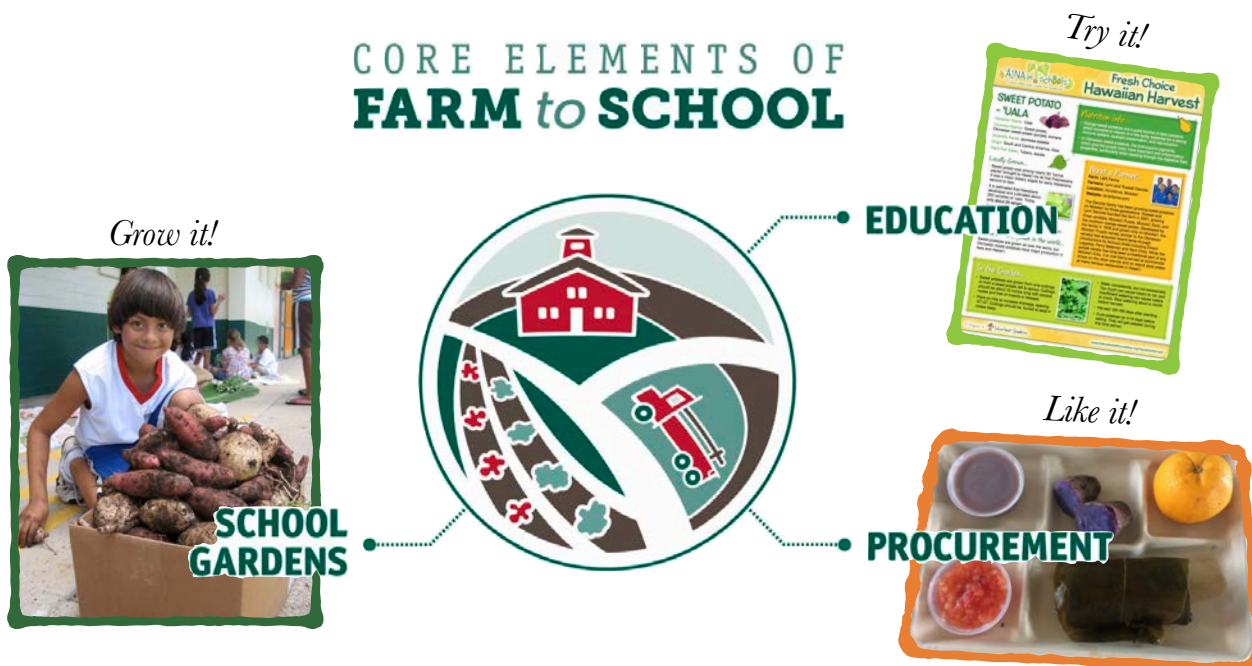


# Farm to School

## The Need: State-Level Support For All Elements of Farm to School

### CORE ELEMENTS OF FARM to SCHOOL



### SCHOOL GARDENS

### PROCUREMENT, SCHOOL FOOD

### EDUCATION

**PROBLEM:** No formal program, funding, or resource staff positions exist in the Hawai'i Department of Education (HIDOE) to support **more than 200 learning garden programs** in Hawai'i's K-12 public schools.

**SOLUTION:** Establish the **HIDOE Hawai'i School Gardens Program** and fund state-level and complex area-level support positions to provide training, technical assistance, and grants for school gardens.

**JUSTIFICATION:** School learning gardens are key to **equity and whole child wellbeing**. They serve as outdoor classrooms to accommodate diverse learning styles, and as a **key instructional strategy** for standards-based curriculum, social and emotional learning, Nā Hopena A'o (HĀ), climate change resilience, wellness, and more.

**PROBLEM:** A **staffing shortage** in HIDOE School Food Services Branch (SFSB) slows expansion of meal improvements for all public schools through the 'Aina Pono Hawai'i State Farm to School Program.

**SOLUTION:** **Fund procurement and nutritionist positions** in HIDOE SFSB.

**JUSTIFICATION:** These positions will work with the SFSB Farm to School Coordinator to directly support **expansion of the 'Aina Pono Hawai'i State Farm to School Program** to all public schools.

**PROBLEM:** The **average age of farmers in Hawai'i is over 60 years**, and Hawai'i does not have an adequate-sized farming workforce for expansion of cultivated agricultural lands and food production.

**SOLUTION:** Invest in agriculture education by funding a P-20 (preschool through post-secondary) **Agriculture Education Coordinator**, fulfilling a key recommendation of the P-20 Agriculture Education Working Group in its final report to the 2019 Hawai'i State Legislature.

**JUSTIFICATION:** This position will focus on **infusing agriculture education into teacher development programs** at all levels (P-20).