

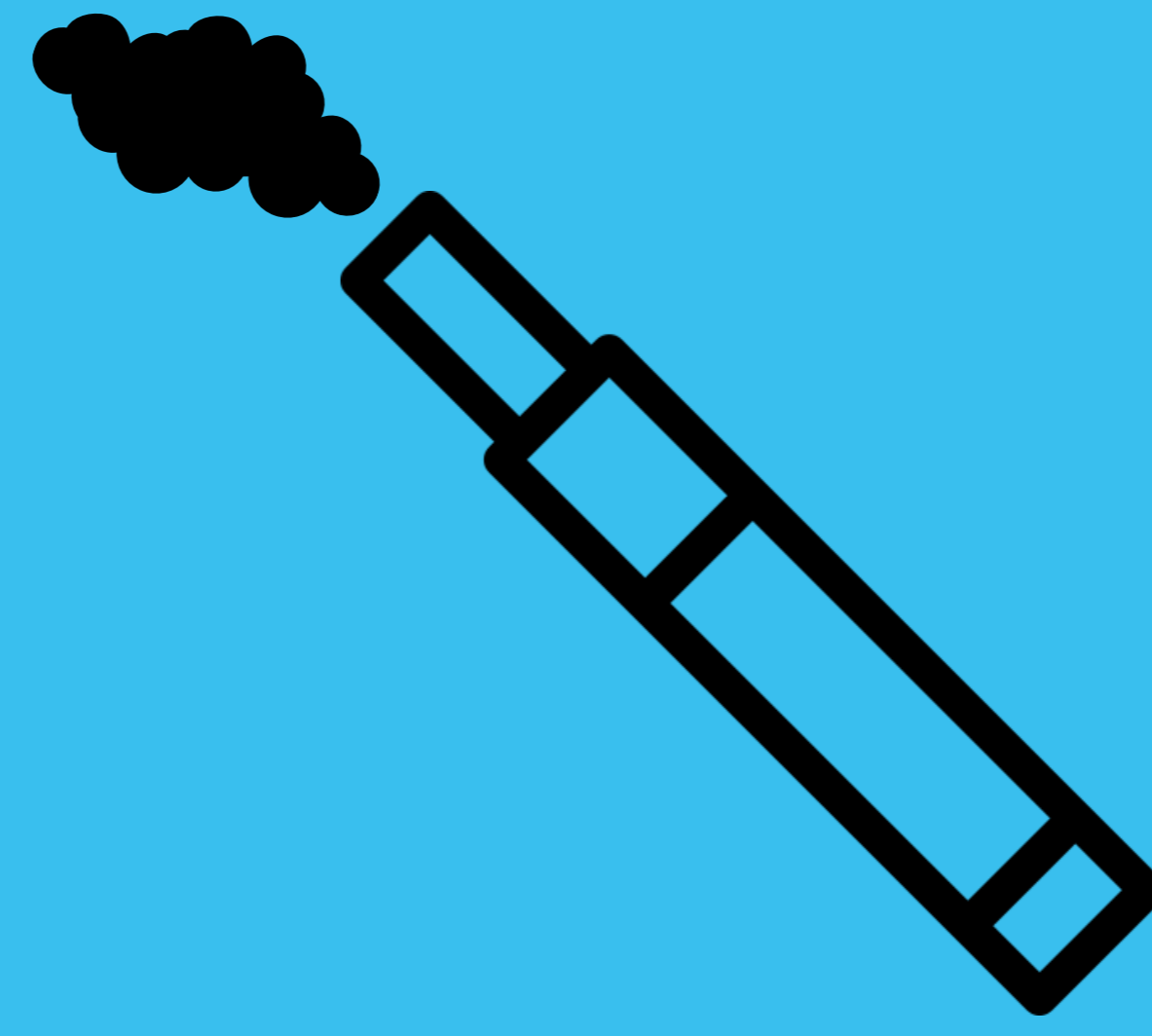
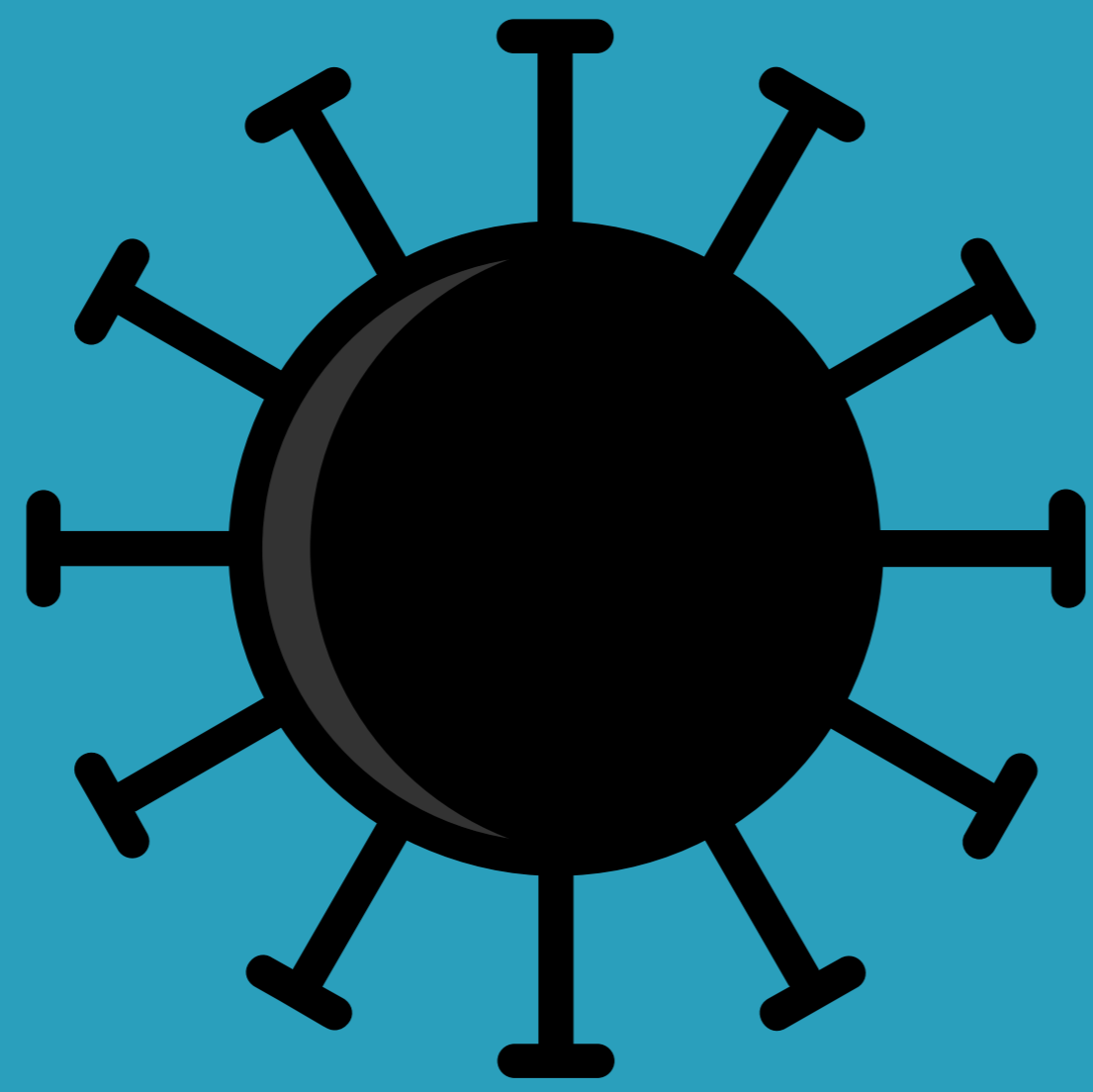
# SIMILARITIES BETWEEN

# COVID-19 & EVALI

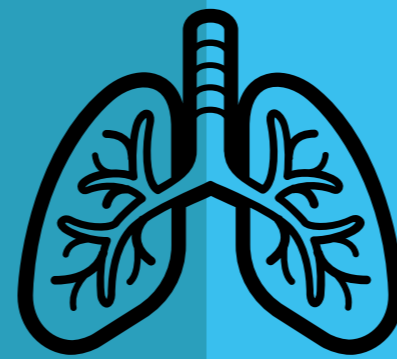
(Coronavirus disease 2019 & E-cigarette or Vaping Associated Lung Injury)

COVID-19

EVALI



Shortness of breath  
or difficulty breathing



Shortness of breath

Cough



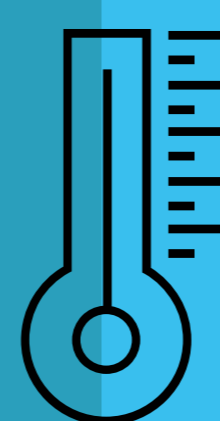
Cough

Fatigue/headache



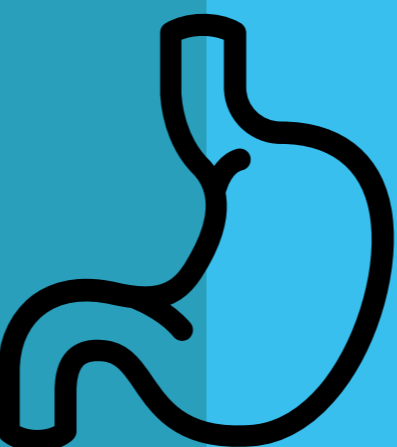
Fatigue

Fever or chills



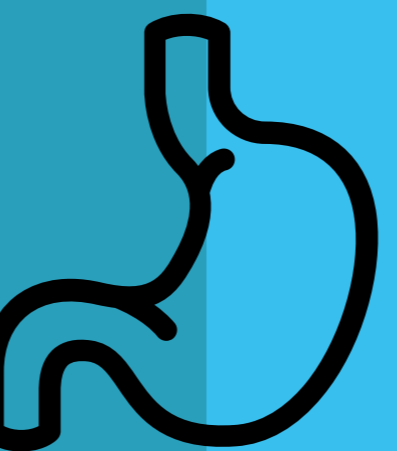
Fever

Nausea or  
vomiting



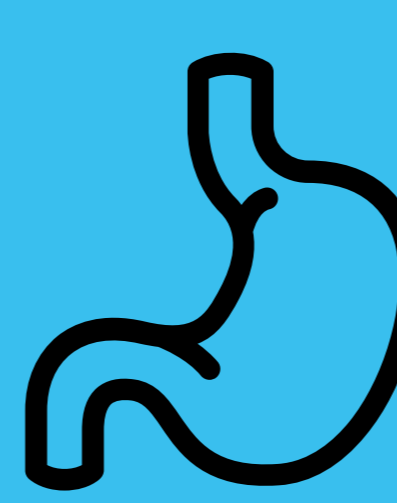
Nausea or  
vomiting

Diarrhea



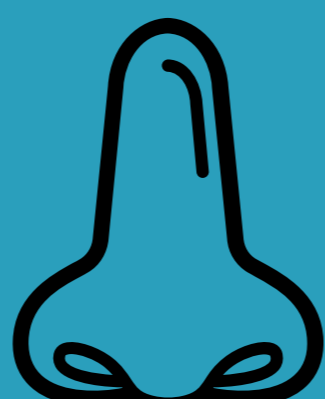
Diarrhea

Muscle or  
body ache



Abdominal  
pain

New loss of  
taste or smell

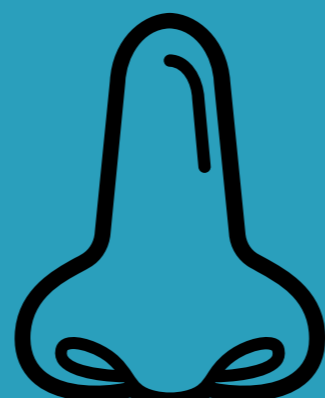


Chest pain

Sore throat



Congestion or  
runny nose



## KEY DIFFERENCES

COVID-19 and EVALI mimic each other's symptoms.  
What should you look out for?

- COVID-19 key signs:
  - Symptoms are usually mild and begin gradually
  - If infected, symptoms can appear 2-14 days after exposure
  - In adults, emergency warning signs include but are not limited to:
    - Difficulty breathing or shortness of breath
    - Persistent pain or pressure in the chest
    - New confusion or inability to awake
    - Bluish lips or face
- EVALI key signs:
  - History of e-cigarette use
  - No known exposure to someone with COVID-19
  - EVALI does not have an available test, so careful monitoring of your symptoms, knowing and communicating your exposure to or use of e-cigarettes, and working with your doctor to eliminate other potential illnesses are extremely important

Sources

<https://med.stanford.edu/tobaccopreventiontoolkit/COVID-19.html>  
<https://www.clickorlando.com/news/local/2020/05/11/are-teens-vaping-during-pandemic-pediatric-critical-care-physician-says-4-patients-in-icu/>  
<https://www.abc4.com/sponsored/4pm-sponsored/vaping-injuries-climbing-more-difficult-to-diagnose-during-time-of-covid-19-pandemic-proper-diagnosis-is-key/>  
[https://www.cdc.gov/tobacco/basic\\_information/e-cigarettes/severe-lung-disease/healthcare-providers/index.html](https://www.cdc.gov/tobacco/basic_information/e-cigarettes/severe-lung-disease/healthcare-providers/index.html)

Sources

<https://hawaiicovid19.com/symptoms/>  
<https://www.cdc.gov/mmwr/volumes/69/wr/mm6925a5.htm>  
<https://hawaii.quitlogix.org/en-US/Covid-19>  
<https://health.hawaii.gov/coronavirusdisease2019/for-clinicians/evaluating-puis/>  
<https://www.lung.org/lung-health-diseases/lung-disease-lookup/evali>  
Some icons made by [Eucalyp](#) and [Vitaly Gorbachev](#) from [flaticon.com](#)